

## GUARANTEED ANALYSIS

Calcium (Ca)..... 10%  
Also contains non-plant food ingredient  
Silicon Dioxide (SiO<sub>2</sub>) ..... 22%

## HOW DOES IT WORK?

**TurfRx Si** strengthens cell walls and reduces environmental oxidative stress.

## WHAT IS TURFRX SI?

**TurfRx Si** is a reacted plant nutrient high in calcium and silicon.

---

## KEY PRODUCT BENEFITS

1. Highly plant-available calcium.
2. Highly plant-available silicon.

## MOST EFFECTIVE USE

### SOIL APPLICATIONS

Apply directly to the soil surface and water in at a rate of 0.25 to 5 gallons per acre (0.75 to 15 ounces per 1000 ft<sup>2</sup>) in 30 or more gallons of water per acre, and water in.

### FOLIAR APPLICATIONS

Apply directly to the soil surface and water in at a rate of 0.25 to 1 gallon per acre (0.75 to 3 ounces per 1000 ft<sup>2</sup>) in 30 or more gallons of water per acre, and water in.

Up to 5 gallons per acre can be used in some circumstances.

Frequency, rate, and quantity of applications depend upon specific plant and soil requirements.

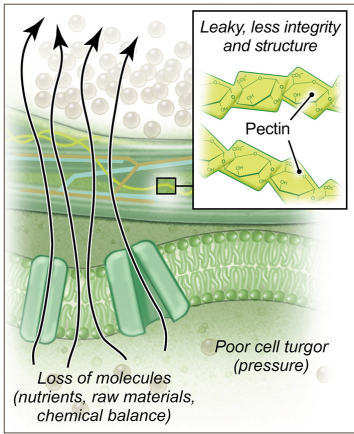
## RELEVANT TERMS

**CALCIUM NUTRITION** - Critical to proper cell wall strength.

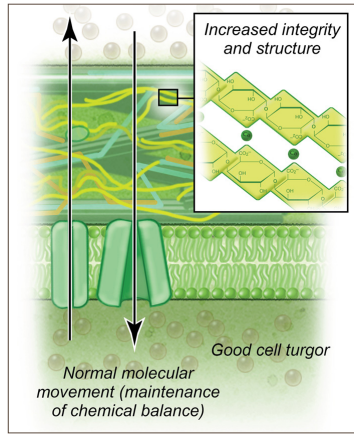
**ENVIRONMENTAL OXIDATIVE STRESS** - The accumulation of oxygen-free radicals in plants. Excess oxygen-free radicals cause premature cell degradation.

**SILICON NUTRITION** - Research indicates that increased silicon levels in plants can improve cell wall integrity and reduce oxidative stress.

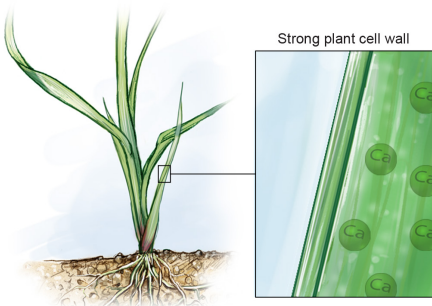
**WEAK CELL STRUCTURE:**  
PLANT IS SUSCEPTIBLE TO  
ENVIRONMENTAL OXIDATIVE STRESS



**STRONG CELL STRUCTURE:**  
PLANT IS MORE RESISTANT TO  
ENVIRONMENTAL OXIDATIVE STRESS



**CELLS ARE THE BASIC STRUCTURAL,  
FUNCTIONAL & BIOLOGICAL UNIT IN PLANTS.**



Illustrations © Amino Creative, LLC