

GUARANTEED ANALYSIS

Nitrogen (N).....	1%
0.2%.....Ammoniacal Nitrogen	
0.8%.....Other Water Soluble Nitrogen	
Available Phosphate (P ₂ O ₅).....	5%
Soluble Potash (K ₂ O).....	5%
Boron (B).....	0.2%
Copper (Cu).....	0.2%
Iron (Fe).....	0.8%
Manganese (Mn).....	0.5%
0.5%.....Water Soluble Manganese (Mn)	
Molybdenum (Mo).....	0.001%
Zinc (Zn).....	0.6%

WHAT IS TURFRX GREEN?

TurfRx Green is a reacted plant nutrient high in potassium, phosphorus, soluble carbon, and micronutrients.

HOW DOES IT WORK?

TurfRx Green facilitates nitrogen metabolism, improves soil microbial activity, and stimulates root growth while providing very efficient plant response due to chelation and complexing technology.

KEY PRODUCT BENEFITS

1. Highly efficient total nutrient response when nitrogen inputs are well-managed.
2. Strong plants.
3. Stress tolerant plants.
4. Consistency in results.

MOST EFFECTIVE USE

SOIL APPLICATIONS

Apply at a rate of 0.5 to 2 gallons of water per acre (1.5 to 6 ounces per 1000 ft²) in 50 or more gallons of water per acre, and water in.

FOLIAR APPLICATIONS

Apply at a rate of 0.5 to 1.5 gallons of water per acre (1.5 to 4.5 ounces per 1000 ft²) in 50 or more gallons of water per acre, and water in.

Frequency, rate, and quantity of applications depend upon specific plant requirements.

RELEVANT TERMS

CHELATION - Reaction with a divalent cation for the purpose of preventing undesirable chemical reactions.

COMPLEXING - Reaction with an anion or monovalent cation for the purpose of preventing undesirable chemical reactions.

HUMIC ACID - Medium-chain soluble carbon. Complexes and chelates metal ions. Enhances soil microbial activity and improves soil colloid aggregation.

L-AMINO ACIDS - Carbon, hydrogen, oxygen, and nitrogen compounds that are key to plant metabolism and protein production.

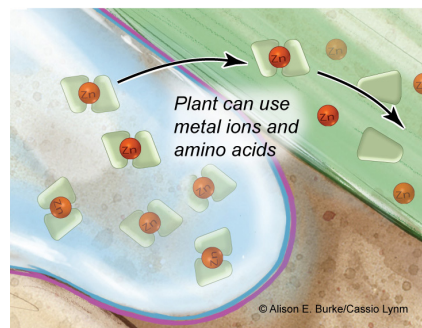
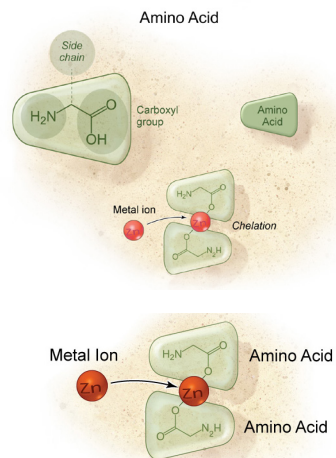
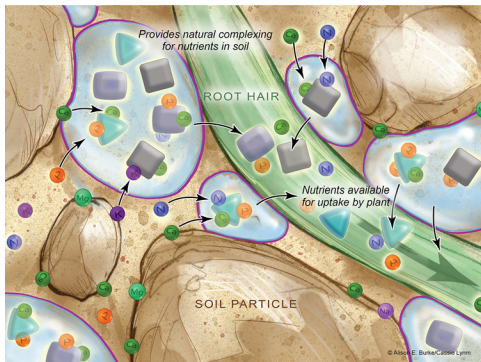


Illustration © Alison E. Burke/Cassio Lynn